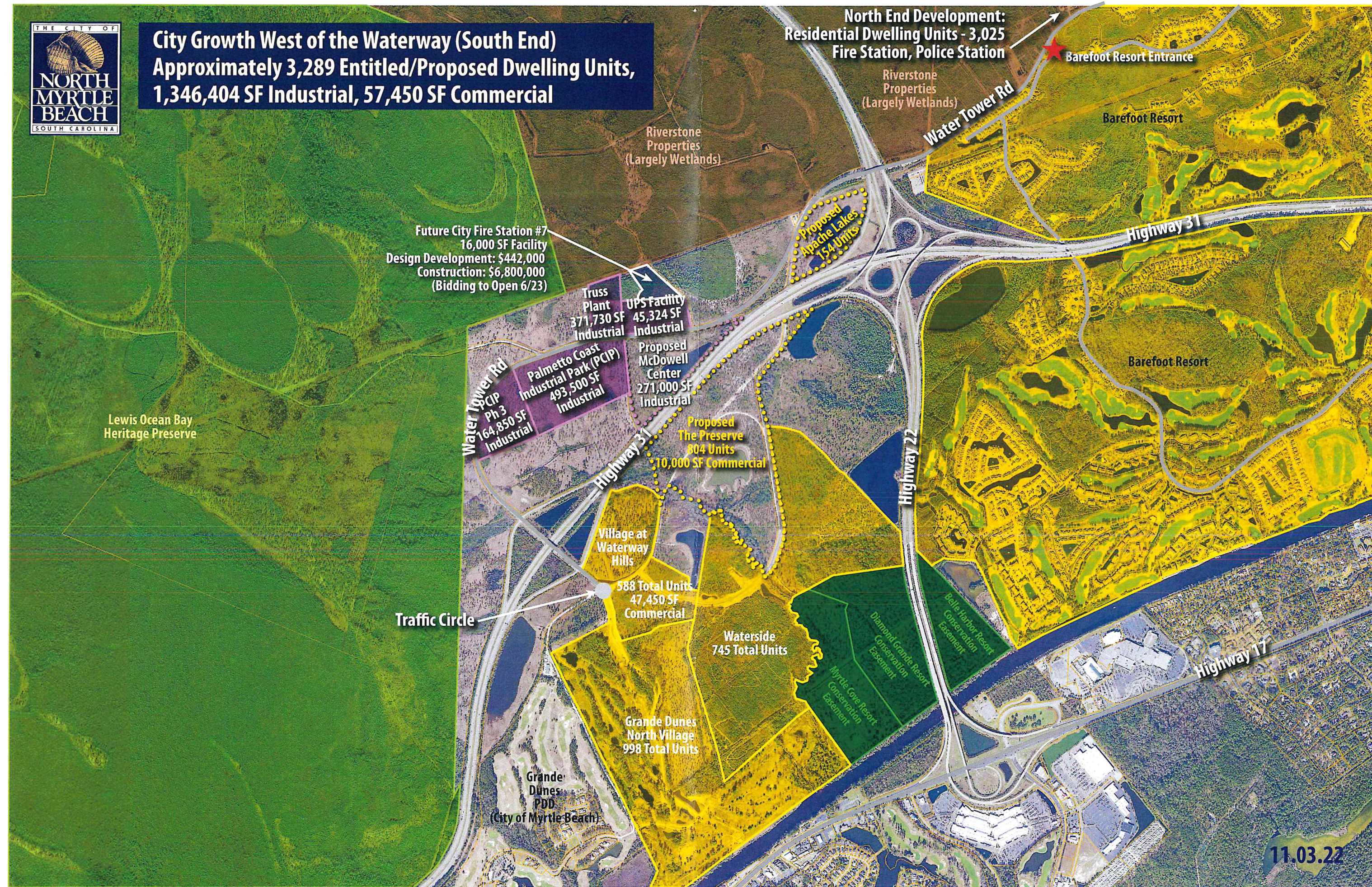
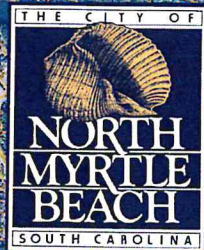


City Growth West of the Waterway (South End)

Approximately 3,289 Entitled/Proposed Dwelling Units,
1,346,404 SF Industrial, 57,450 SF Commercial





City Growth West of the Waterway (North End) Approximately 3,025 Entitled/Proposed Dwelling Units



South to Parkway Group:
Industrial - 1,346,404 SF
Commercial - 57,450 SF
Residential Dwelling Units - 3,289
Fire Station, Police Station

11.03.22